

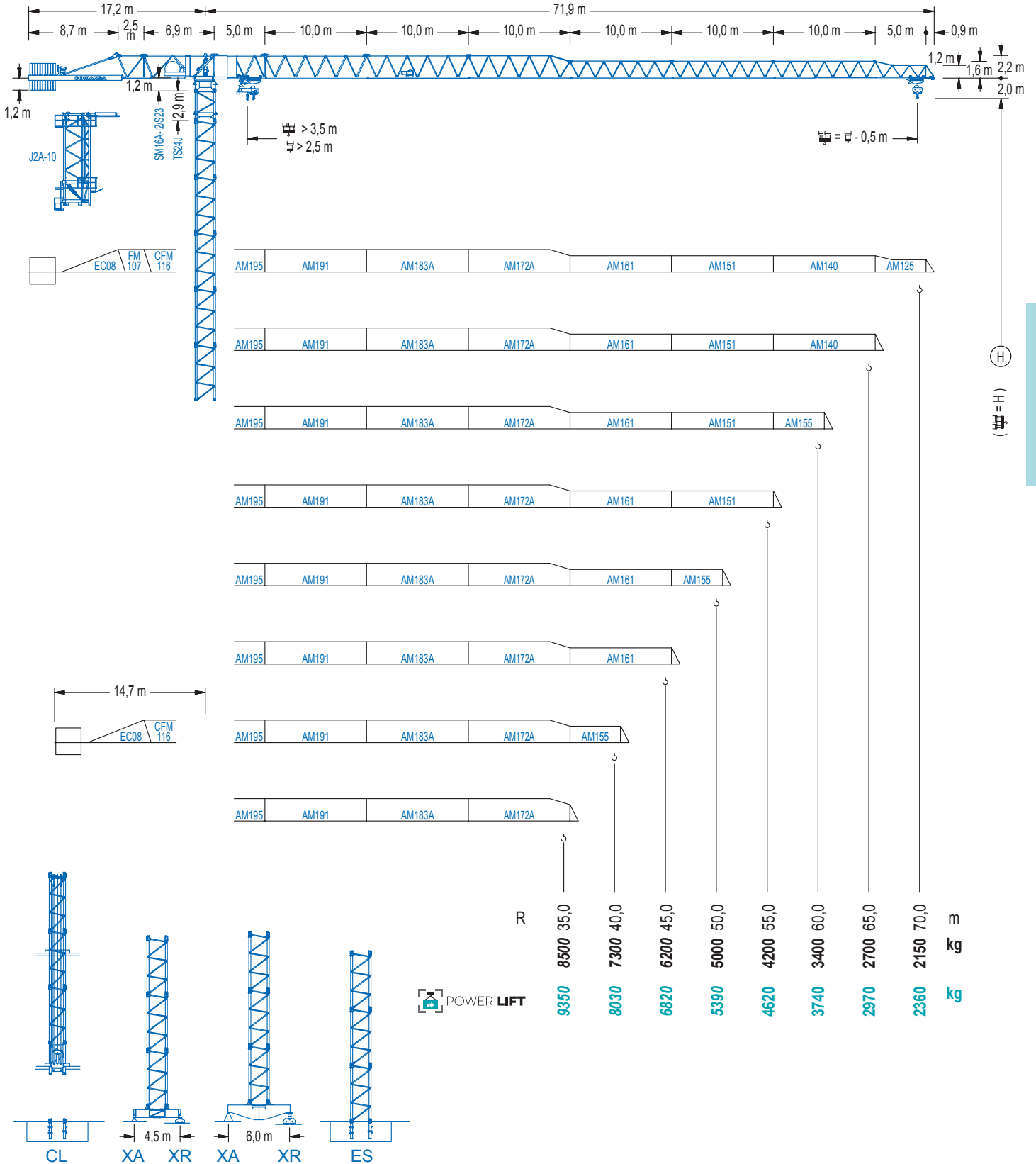


COMANSA

1600 Series

16 LC 260

10 t



1600 Series

CE EN 14439 (C/25)

DIAGRAMA DE CARGAS

Load chart / Diagramme de charges / Lastdiagramm / Diagramma di carico / Диаграмма распределения нагрузки

| R (m) | ☐ | | | | | | | | ☐ | | | | | | | | | | | | | | | | | | | | | | | | | | | | | | | | | | | |
|-------|------|----|--------|-------|--------|---------|--------|-------|------|---------|-------|------|------|---------|-------|------|--------|-------|------|---------|-------|--------|-------|------|------|------|------|---------|------|------|------|------|------|---------|------|------|------|------|------|---------|------|------|------|---------|
| 70 | 17,7 | 22 | 24 | 26 | 28 | 30 | 31,2 | 34,1 | 37 | 40 | 42 | 45 | 47 | 50 | 52 | 55 | 57 | 60 | 62 | 65 | 67 | 70,0 m | 10000 | 7730 | 6970 | 6330 | 5780 | 5320 | 5000 | 5000 | 4560 | 4170 | 3940 | 3640 | 3460 | 3220 | 3080 | 2880 | 2760 | 2600 | 2500 | 2360 | 2270 | 2150 kg |
| 65 | 19,6 | 22 | 24 | 26 | 28 | 30 | 32 | 35,1 | 38,1 | 40 | 42 | 45 | 47 | 50 | 52 | 55 | 57 | 60 | 62 | 65,0 m | 10000 | 8750 | 7900 | 7180 | 6580 | 6050 | 5600 | 5000 | 5000 | 4740 | 4480 | 4140 | 3940 | 3670 | 3510 | 3290 | 3150 | 2970 | 2860 | 2700 kg | | | | |
| 60 | 21,9 | 24 | 26 | 28 | 30 | 32 | 35 | 37 | 39,2 | 42,8 | 45 | 47 | 50 | 52 | 55 | 57 | 60,0 m | 10000 | 8970 | 8170 | 7490 | 6900 | 6390 | 5740 | 5360 | 5000 | 5000 | 4720 | 4500 | 4190 | 4010 | 3760 | 3610 | 3400 kg | | | | | | | | | | |
| 55 | 23,9 | 26 | 28 | 30 | 32 | 35 | 37 | 40 | 42 | 43,0 | 47,1 | 50 | 52 | 55,0 m | 10000 | 9090 | 8340 | 7700 | 7140 | 6420 | 6000 | 5460 | 5140 | 5000 | 5000 | 4680 | 4480 | 4200 kg | | | | | | | | | | | | | | | | |
| 50 | 27,1 | 30 | 32 | 35 | 37 | 40 | 42 | 45 | 49,0 | 50,0 m | 10000 | 8890 | 8250 | 7430 | 6960 | 6350 | 5990 | 5510 | 5000 | 5000 kg | | | | | | | | | | | | | | | | | | | | | | | | |
| 45 | 29,5 | 32 | 35 | 37 | 40 | 42 | 44,5 m | 10000 | 9110 | 8220 | 7710 | 7030 | 6640 | 6200 kg | | | | | | | | | | | | | | | | | | | | | | | | | | | | | | |
| 40 | 30,1 | 32 | 35 | 37 | 39,5 m | 10000 | 9310 | 8400 | 7880 | 7300 kg | | | | | | | | | | | | | | | | | | | | | | | | | | | | | | | | | | |
| 35 | 29,9 | 32 | 34,5 m | 10000 | 9270 | 8500 kg | | | | | | | | | | | | | | | | | | | | | | | | | | | | | | | | | | | | | | |

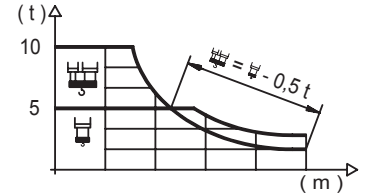
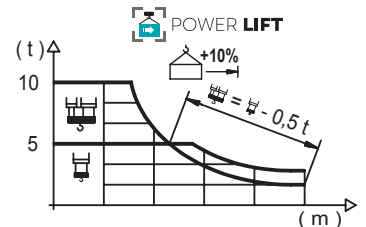


DIAGRAMA DE CARGAS POWERLIFT

Load chart PowerLift / Diagramme de charges PowerLift / Lastdiagramm PowerLift / Diagramma di carico PowerLift / Диаграмма распределения нагрузки PowerLift

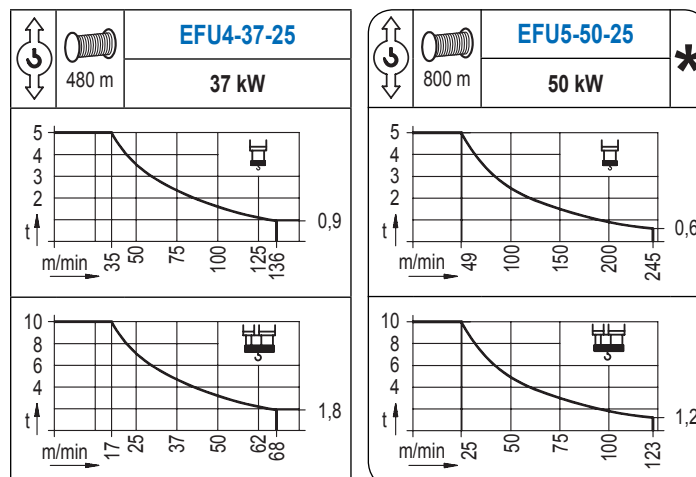
| R (m) | ☐ | | | | | | | | ☐ | | | | | | | | | | | | | | | | | | | | | | | | | | | | | | | | | | | |
|-------|------|--------|-------|---------|-------|--------|-------|---------|--------|-------|------|---------|--------|-------|------|--------|-------|---------|------|--------|-------|--------|-------|------|------|---------|------|------|------|------|------|---------|------|------|------|------|------|------|------|---------|------|------|------|---------|
| 70 | 18,7 | 22 | 24 | 26 | 28 | 30 | 33,3 | 36,7 | 37 | 40 | 42 | 45 | 47 | 50 | 52 | 55 | 57 | 60 | 62 | 65 | 67 | 70,0 m | 10000 | 8250 | 7440 | 6770 | 6190 | 5690 | 5000 | 5000 | 4960 | 4540 | 4300 | 3970 | 3780 | 3520 | 3360 | 3150 | 3020 | 2840 | 2730 | 2580 | 2490 | 2360 kg |
| 65 | 20,9 | 22 | 24 | 26 | 28 | 30 | 32 | 35 | 37,4 | 41,3 | 42 | 45 | 47 | 50 | 52 | 55 | 57 | 60 | 62 | 65,0 m | 10000 | 9410 | 8500 | 7740 | 7090 | 6530 | 6050 | 5420 | 5000 | 5000 | 4900 | 4540 | 4320 | 4020 | 3850 | 3610 | 3460 | 3260 | 3140 | 2970 kg | | | | |
| 60 | 23,4 | 26 | 28 | 30 | 32 | 35 | 37 | 40 | 42,0 | 46,40 | 47 | 50 | 52 | 55 | 57 | 60,0 m | 10000 | 8850 | 8120 | 7490 | 6940 | 6240 | 5830 | 5300 | 5000 | 5000 | 4930 | 4600 | 4400 | 4130 | 3970 | 3740 kg | | | | | | | | | | | | |
| 55 | 25,7 | 28 | 30 | 32 | 35 | 37 | 40 | 42 | 45 | 46,3 | 51,2 | 52 | 55,0 m | 10000 | 9080 | 8380 | 7770 | 7000 | 6550 | 5970 | 5630 | 5170 | 5000 | 5000 | 4920 | 4620 kg | | | | | | | | | | | | | | | | | | |
| 50 | 29,2 | 32 | 35 | 37 | 40 | 42 | 45 | 47 | 49,5 m | 10000 | 9010 | 8130 | 7620 | 6960 | 6560 | 6050 | 5740 | 5390 kg | | | | | | | | | | | | | | | | | | | | | | | | | | |
| 45 | 32,0 | 35 | 37 | 40 | 42 | 44,5 m | 10000 | 9010 | 8460 | 7730 | 7300 | 6820 kg | | | | | | | | | | | | | | | | | | | | | | | | | | | | | | | | |
| 40 | 32,6 | 35 | 37 | 39,5 m | 10000 | 9230 | 8660 | 8030 kg | | | | | | | | | | | | | | | | | | | | | | | | | | | | | | | | | | | | |
| 35 | 32,5 | 34,5 m | 10000 | 9350 kg | | | | | | | | | | | | | | | | | | | | | | | | | | | | | | | | | | | | | | | | |



Datos válidos hasta 100 m de ABG. Para alturas mayores consultar / Valid data up to 100 m HUH. Additional heights on request / Données valables jusqu'à 100 m HSC. Pour des autres hauteurs, merci de nous consulter / Gültige Daten bis zu 100 m HH. Bei höheren Hakenhöhen nachfragen / Dati validi fino a 100 m ASG. Per altezze superiori consultare Comansa / Допустимые данные до 100 м ВПК. Для более высоких высот консультируйтесь

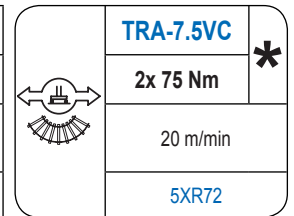
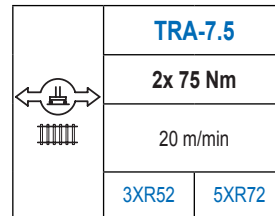
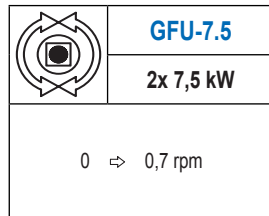
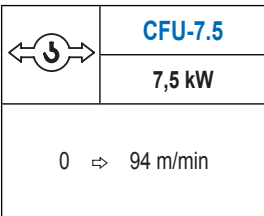
MECANISMOS

Mechanisms / Mécanismes / Antriebe / Meccanismi / Механизмы



MECANISMOS

Mechanisms / Mécanismes / Antriebe / Meccanismi / Механизмы



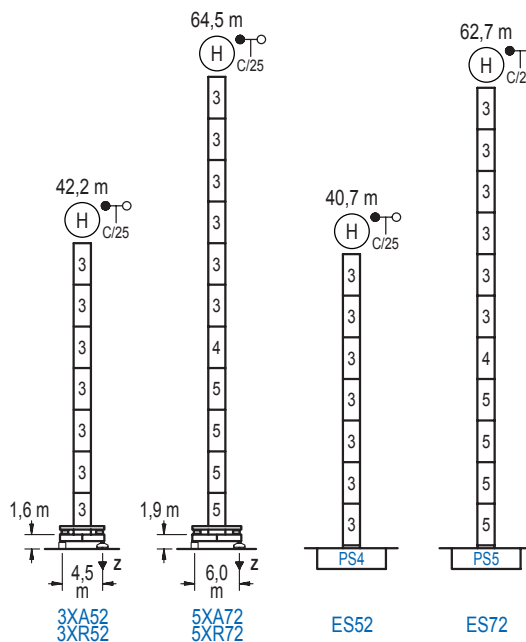
| | | | | | |
|--|--|--|---|--|---|
| Elevación / Hoist / Levage / Hub / Sollevamento / Тип механизма (подъем) | Carro / Trolley / Chariot / Laufkatze / Carrelo / Грузовая тележка | Giro / Slewing / Rotation / Drehbewegung / Rotazione / Поворот | Traslación / Travel / Translation / Verfahrbewegung / Traslazione / Ход | Tensión de alimentación / Operating voltage / Tension de service / Betriebsspannung / Tensione di alimentazione / Напряжение источника питания | Potencia requerida / Required power / Puissance requise / Benötigte Leistung / Potenza richiesta / требуемая мощность |
| EFU4-37-25 | CFU-7.5 | (2x) GFU-7.5 | (2x) TRA-7.5 | 400 V 3ph 50 Hz | 55 kVA |
| EFU5-50-25 | | | | | 68 kVA |

| |
|--|
| Optional / Optional / En option / Kaufoption / Opzionale / Опционально |
| * |

ALTURAS BAJO GANCHO

Heights under hook / Hauteurs sous crochet / Hakenhöhen / Altezza sotto gancio / Высота под крюком

∅ 2,0 m

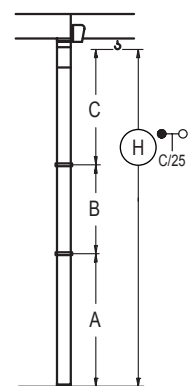


| | | | | |
|------------------|----|------|-----|-----|
| | n° | Ref. | ∅ | h |
| | 3 | S24 | 2,0 | 5,5 |
| | 4 | TS25 | 2,0 | 5,5 |
| | 5 | S25 | 2,0 | 5,5 |
| 1x S25 = 1x S25M | | | | |

| | | |
|--------|--|-------------------------------------|
| Z máx. | En servicio / In operation / En service / In Betrieb / In servizio / При работе | 3XR52..... 99 t 5XR72..... 89 t |
| | Fuera de servicio / Out of service / Hors service / Ausser Betrieb / Fuori servizio / В стационарном состоянии | 3XR52..... 67 t 5XR72..... 136 t |

GRÚA ARRIOSTRADA

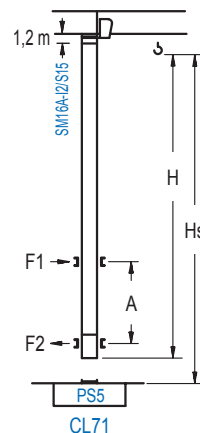
Braced crane / Grue à entretoisement / Abgespannter Kran / Gru ancorata / Нарастиваемый кран



| | | |
|-------|-------|-------|
| | 3XA52 | 5XA72 |
| A max | 29,1 | 51,4 |
| A min | 23,6 | 29,4 |
| B max | - | 22,0 |
| B min | - | 16,5 |
| C max | 35,1 | 35,1 |
| H max | 64,2 | 86,2 |
| | ES52 | ES72 |
| A max | 27,6 | 49,6 |
| A min | 22,1 | 27,6 |
| B max | - | 22,0 |
| B min | - | 16,5 |
| C max | 35,1 | 35,1 |
| H max | 62,7 | 84,7 |

GRÚA TREPADORA

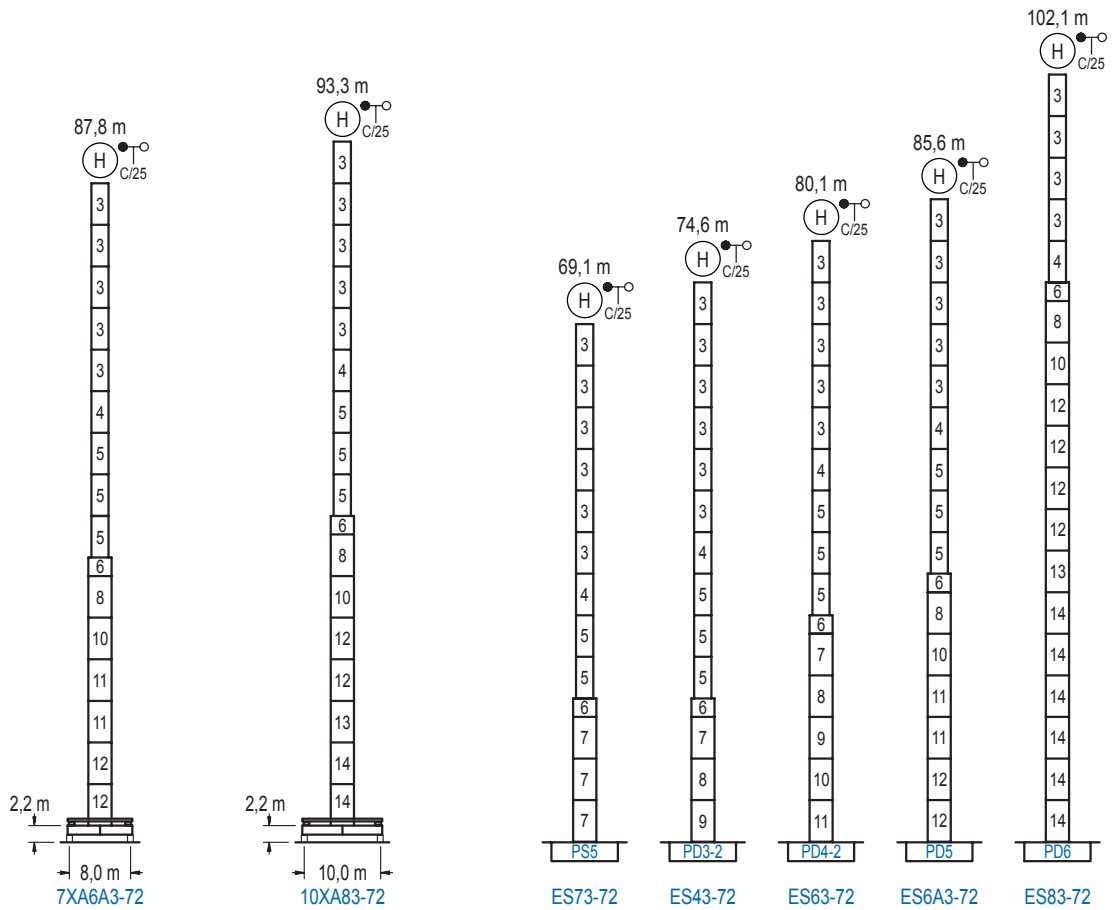
Internal climbing crane / Grue avec cage de télescopage intérieure / Kran mit klettern im Gebäude / Gru in rampante in cavedio / Кран с самоподъемом



| | | | |
|--------|-------------------|-------|-------|
| | Hs < 400 m | A max | A min |
| | | (m) | (m) |
| 40,8 m | 7x S15 + CLS15-08 | 16,8 | 9,0 |
| 35,3 m | 6x S15 + CLS15-08 | 14,1 | 9,0 |
| 29,8 m | 5x S15 + CLS15-08 | 11,4 | 7,0 |

| | | | | |
|------------------|----|----------|-----|-----|
| | n° | Ref. | ∅ | h |
| | 14 | S15 | 1,6 | 5,5 |
| | 15 | CLS15-08 | 1,6 | 3,1 |
| 1x S15 = 1x S15M | | | | |

Otras zonas de viento, alturas superiores, arriostramientos o trepado interno consultar / Other wind zones, additional hook heights, tie frames or internal climbing on request / Autres zones de vent, des hauteurs supplémentaires, entretoisements ou grues avec cage de télescopage intérieure, sur demande / Andere Windzonen, weitere Hakenhöhen, Abspannungen zum Gebäude oder Klettern im Gebäude auf Anfrage / Per zone con velocità del vento particolari, altezze superiori, ancoraggi o rampante in cavedio, consultare il fabbricante / При других ветренных зонах, при большой высоте, привязках к зданию или наращивании крана внутри здания проконсультируйтесь с нами



| n° | Ref. | ∅ | h | n° | Ref. | ∅ | h | n° | Ref. | ∅ | h | n° | Ref. | ∅ | h |
|------------------|------|-----|-----|------------------|-------|-----|-----|----|------|-----|-----|----|------|-----|-----|
| | | | | | | | | | | | | | | | |
| 4 | TS25 | 2,0 | 5,5 | 7 | S35 | 2,5 | 5,5 | 11 | D34 | 2,5 | 5,5 | 14 | D36B | 2,5 | 5,5 |
| 5 | S25 | 2,0 | 5,5 | 8 | TD33A | 2,5 | 5,5 | 12 | D35 | 2,5 | 5,5 | | | | |
| | | | | 9 | D33 | 2,5 | 5,5 | | | | | | | | |
| | | | | 1x S35 = 1x S35M | | | | | | | | | | | |
| | | | | 1x D33 = 1x D33M | | | | | | | | | | | |
| 1x S25 = 1x S25M | | | | | | | | | | | | | | | |

Otras zonas de viento o alturas superiores consultar / Other wind zones or additional hook heights on request / Autres zones de vent ou des hauteurs supplémentaires sur demande / Andere Windzonen oder weitere Hakenhöhen auf Anfrage / Per zone con velocità del vento particolari o altezze superiori consultare il fabbricante / При других ветренных зонах о при большой высоте проконсультируйтесь с нами